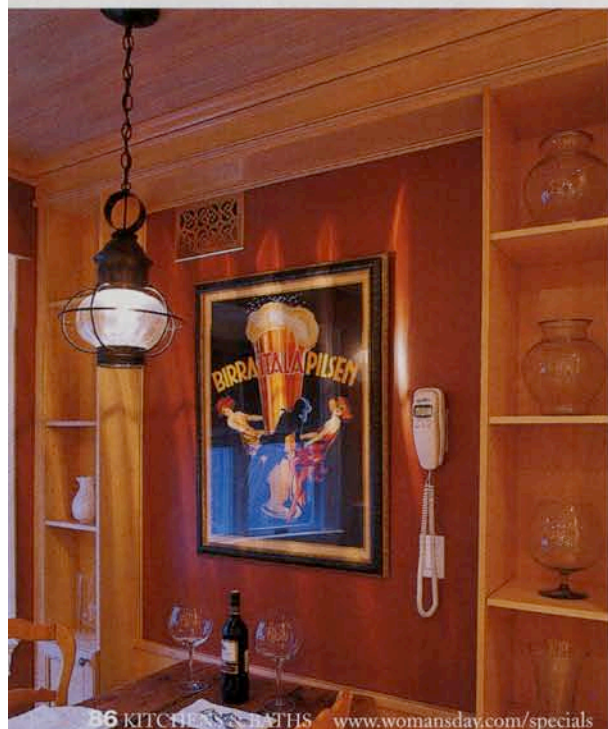




ABOVE: Once a solid wall, a new pass-through and glass cabinets provide a view of the Long Island Sound. The pass-through makes for easy serving and cleaning up when entertaining. BELOW: An antique pine table, pulled up to the wall serves as a breakfast table, food prep area and occasional office space. Shallow cabinets and shelves add storage and frame the table.

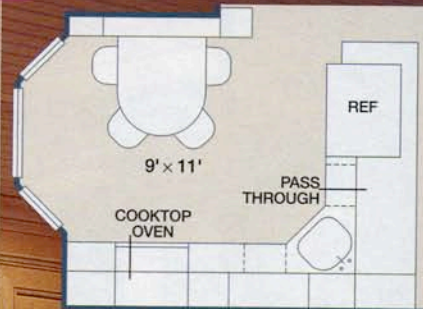


Less Is More

WHEN HIS SMALL, 1980S kitchen needed renovation, Foster Kaali-Naagy with designer Jason Landau, of the Kitchen Design Studio in New Canaan, Connecticut, took their cue from the harbor scene outside the Cos Cob, Connecticut town house. They created a view from the kitchen to the living/dining room and its spectacular view of the Long Island Sound.

Instead of removing the entire wall between the two rooms, which would diminish counter and storage space, Landau used a pass-through and topped it off with glass cabinets, to bring in more sunlight. Six inches higher than the counter, the pass-through conceals the sink and workspace from the adjoining dining room.—*Brice Gaillard*

Floor Plan



Careful placement of appliances allows for larger workstations. Cabinets, below either side of the pass-through, double the amount of storage space.

Little Helpers

Designer Jason Landau offers some space-saving tips for small kitchens:

- Integrate appliances into the cabinetry. By limiting contrasting surfaces and colors, the room will appear larger.
- Arrange appliances carefully. A combination over-the-range microwave and range hood saves counter or cabinet space.
- Put the sink in a corner. This takes up hard-to-use space, while freeing up more convenient work areas.
- Place the refrigerator close to the entrance of the kitchen so guests can grab what they want, without getting in the cook's way.
- Consider using smaller appliances.
- Attach a kitchen island or breakfast table to a wall to widen the footpath.
- Expand space visually with a pass-through. Or, create the appearance of a pass-through by installing a cabinet with glass doors.
- Store cutlery and spices in pull-out drawers.

Maple cabinets extend to the ceiling to maximize storage space. The natural tones of the limestone backsplash, granite countertop, oak floors and off-white bead-board ceiling give the kitchen a bright, open feel.

SEE BUYING GUIDE FOR DETAILS